



MINISTRY OF  
SOCIAL DEVELOPMENT  
*Te Manatū Whakahiato Ora*

Department of Labour  
TE TARI MAHI



Auckland

## QUARTERLY REGIONAL LABOUR MARKET UPDATE FOR DECEMBER 2006

## AUCKLAND

### QUARTERLY REGIONAL LABOUR MARKET UPDATE FOR DECEMBER 2006

#### EXECUTIVE SUMMARY

The labour force participation rate in Auckland stood at 67.2% during the year to December 2006 up from 66.6% the year before. In comparison, the national average participation rate was 68.4% for the year to December 2006.

The unemployment rate in Auckland remained the same at 3.7% for the year to December 2006 (national average: 3.8%).

There were 11,064 working aged people receiving unemployment benefits from Work and Income in the Auckland region at the end of December 2006.

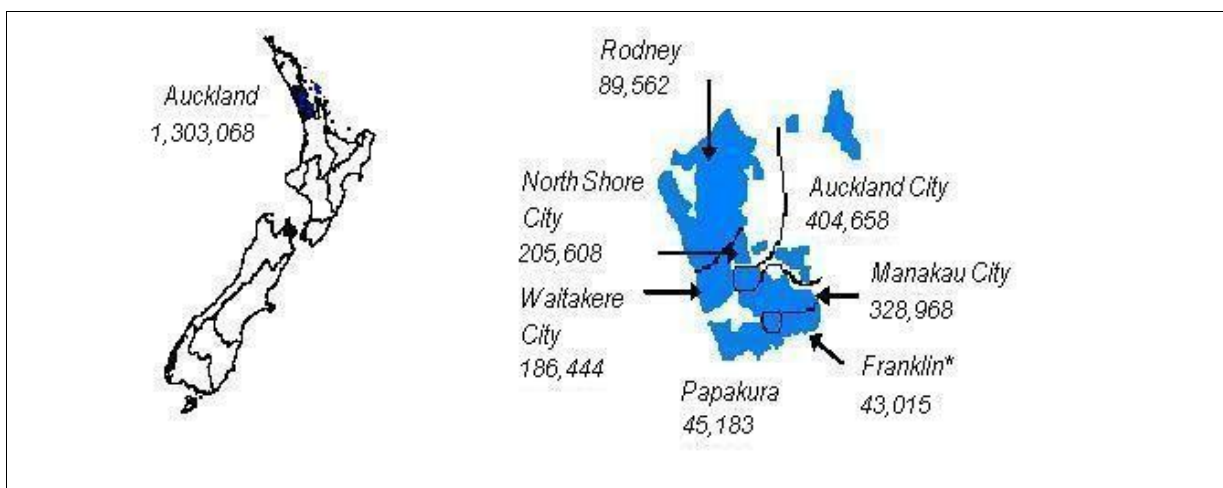
Advertised vacancies in Auckland declined by 24.9% in the year to December 2006, compared with a fall of 8.0% at the national level.

The data presented in this report is by regional council boundaries. This the first time some of this information has been available using regional council boundaries.

#### BACKGROUND

This report includes information relating to the area covered by the Auckland region as shown in Box 1.

#### Box 1: Map and population of Auckland for March 2006



Source: Population Census 2006, Statistics New Zealand

Note: Franklin extends into the Waikato region. The population figure for Franklin is for the portion of Franklin District in the Auckland region.

This report is a quarterly update of current labour market conditions in the Auckland region. The sources of statistics are the Statistics New Zealand Household Labour Force Survey (HLFS), Ministry of Social Development (MSD) and the Department of Labour Job Vacancy Monitor (JVM). To counter the effects of seasonality and low sample size when making comparisons over time, the figures presented are averages for the year up to the quarter indicated, unless otherwise stated.

**Table 1: Key labour market data for the Auckland region**

<i>HLFS Indicator</i>	<i>Auckland</i>		<i>New Zealand</i>	
	year to December 2005	year to December 2006	year to December 2005	year to December 2006
Participation rate, ann ave	66.6%	67.2%	67.8%	68.4%
Employment rate, ann ave	64.1%	64.8%	65.3%	65.8%
Unemployment rate, ann ave	3.7%	3.7%	3.7%	3.8%

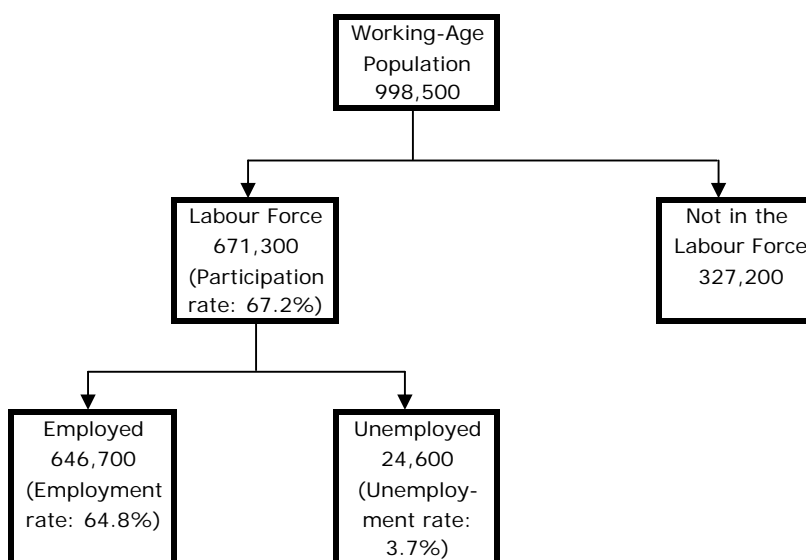
<i>Unemployment Beneficiary Indicator</i>	<i>Auckland</i>		<i>New Zealand</i>	
	End of December 2006 ('000)	share in NZ	End of December ('000)	% change since December 2002
Working aged UB/UBH recipients (aged 18-64)	11,064	28.5%	38,796	-67.2%

<i>JVM Indicator</i>	<i>Auckland</i>		<i>New Zealand</i>	
	year to December 2005	year to December 2006	year to December 2005	year to December 2006
Advertised job vacancy counts, ann ave % change	-4.2%	-24.9%	5.1%	-8.0%

Source: HLFS, Statistics New Zealand; MSD; JVM, Department of Labour

In the year to December 2006 the working-age population in the Auckland region was 998,500. The labour force participation rate was 67.2% while 671,300 people were in the labour force and 327,200 people were 'not in the labour force'. Of those people who were in the labour force, 3.7%, or 24,600 were unemployed and 646,700 were employed.

**Box 2: The labour market in Auckland for the year to December 2006**



Source: HLFS, Statistics New Zealand

Notes:

- Participation rate: proportion of the working-age population that is in the labour force.
- Employment rate: proportion of the working-age population that is employed.
- Unemployment rate: proportion of the labour force that is unemployed.

## POPULATION

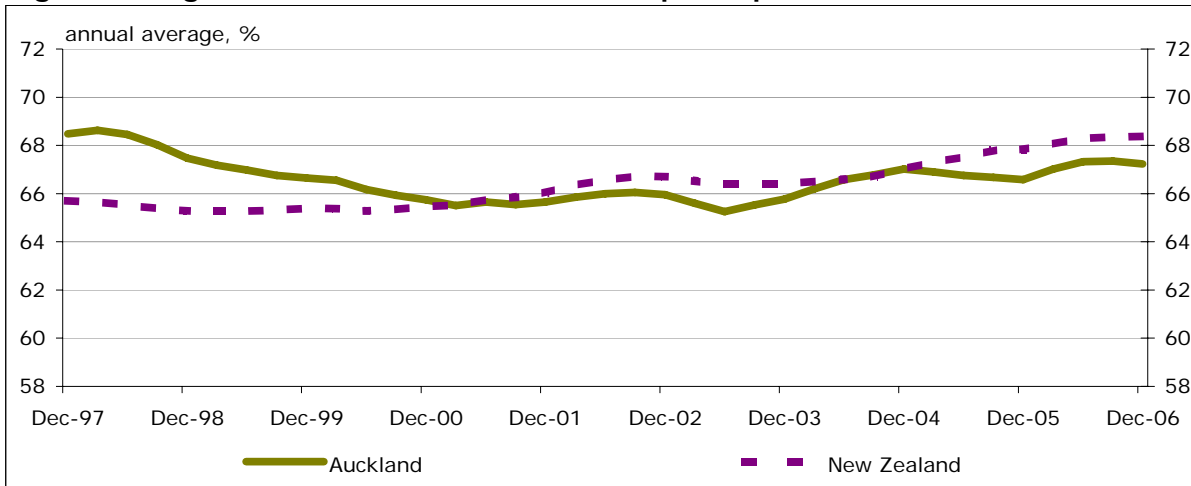
The working-age population in the Auckland region is estimated at 998,500 in the year to December 2006.

## LABOUR FORCE

The participation rate in Auckland stood at 67.2% during the year to December 2006 up from 66.6% the year before. In comparison, the national average participation rate was 68.4% for the year to December 2006.

The number of people in the labour force in the Auckland region is estimated to be 671,300 in the year to December 2006.

**Figure 1: Regional and national trends in the participation rate**



Source: HLFS, Statistics New Zealand

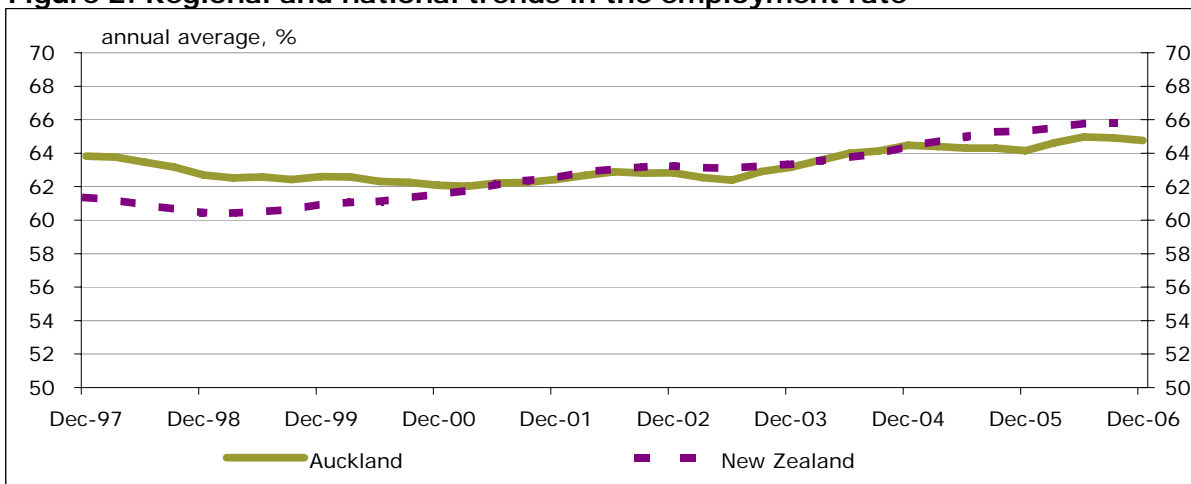
For a more detailed explanation of the labour force and the participation rate, go to the Department of Labour publication: workINSIGHT, issue 5, page 35, *The Labour Market Explained: The Labour Force Participation Rate* at [www.workINSIGHT.govt.nz](http://www.workINSIGHT.govt.nz).

## EMPLOYMENT

The employment rate (the proportion of the working-age population that is employed) in Auckland stood at 64.8% during the year to December 2006 up from 64.1% the year before. In comparison, the national average employment rate was 65.8%.

Employment in the Auckland region was 646,700 in the year to December 2006.

**Figure 2: Regional and national trends in the employment rate**



Source: HLFS, Statistics New Zealand

For a more detailed explanation of employment, go to the Department of Labour publication: workINSIGHT, issue 4, page 32, *The Labour Market Explained: Employment* at [www.workINSIGHT.govt.nz](http://www.workINSIGHT.govt.nz).

## UNEMPLOYMENT

The region's unemployment rate remained steady at 3.7% in the year to December 2006. In comparison, the national average unemployment rate was 3.8% for the year to December 2006.

The number of unemployed people in the region (as measured by the official statistics) is estimated at 24,600 for the year to December 2006.

**Figure 3: Regional and national trends in the unemployment rate**



Source: HLFS, Statistics New Zealand

The Household Labour Force Survey provides an estimate of all persons in the working-age population who during a particular week were without a paid job, available for work and had either actively sought work in the previous four weeks, or had a new job to start within four weeks of the survey week. These numbers will not align exactly with numbers receiving an income tested benefit such as Unemployment Benefit (see next page). There are a range of reasons for this. For example, recipients of income tested benefits can be employed part time up to specified income limits, whereas a respondent to the Household Labour Force Survey must have worked less than an hour during the week being surveyed to count as officially unemployed.

## UNEMPLOYMENT BENEFITS

The Ministry of Social Development has recently begun to make information on numbers receiving social security benefits available for Territorial Local Authorities. This information also supports display by Regional Council area, the same geographic basis on which other information in this report has been displayed. It will be some time yet before this is available as an annual time-series, so comparisons over time are provided for New Zealand as a whole.

There were 11,064 working aged people receiving unemployment benefits from Work and Income in the Auckland region at the end of December 2006. Their characteristics are shown in the next table.

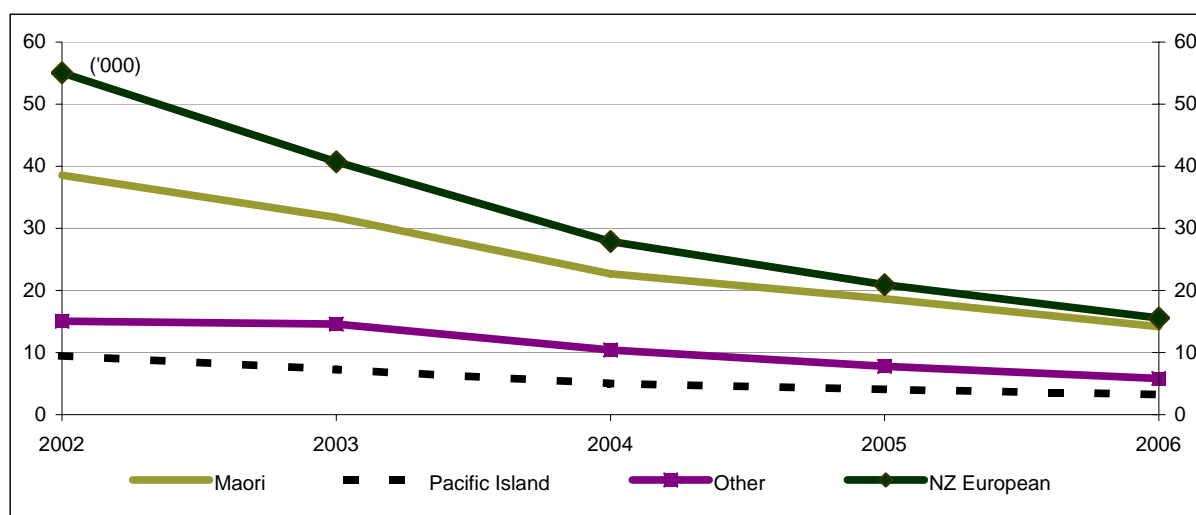
**Table 2: Working aged unemployment benefit recipients (aged 18-64) in the Auckland region and nationally at the end of December 2006**

	Region		New Zealand		Region's share of New Zealand (%)
	Share (%)	Number	Share (%)	Number	
Male	62.8	6,948	65.1	25,256	27.5
Female	37.2	4,116	34.9	13,540	30.4
Maori	29.2	3,231	36.5	14,161	22.8
Pacific People	19.4	2,146	8.3	3,220	66.7
18-24 years	23.1	2,556	24.7	9,583	26.7
25-39 years	33.1	3,662	33.0	12,803	28.6
40-54 years	22.1	2,445	22.1	8,574	28.5
55-64 years	21.6	2,390	20.2	7,837	30.5
<b>Total</b>		<b>11,064</b>		<b>38,796</b>	<b>28.5</b>

Source: MSD

These values occur against a backdrop of significant reductions in the number of current unemployment benefits over time at the national level.

**Figure 4: Clients receiving Unemployment Benefits for the whole of New Zealand, December 2002 - December 2006**



Source: MSD

Notes: Other includes not specified. Values for the end of the December quarter.

## JOB VACANCY TRENDS

The Job Vacancy Monitor (JVM) is a monthly analysis of job advertisements in selected editions of 25 major newspapers around New Zealand and three websites advertising IT vacancies. Over time, JVM informs us about the tightness of the labour market.

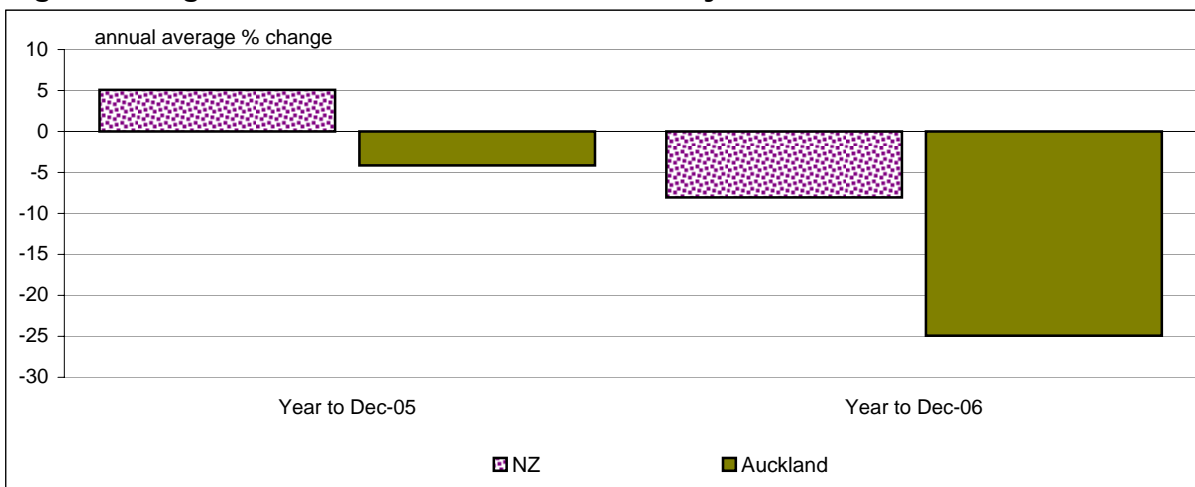
Advertised vacancies in Auckland declined by 24.9% in the year to December 2006, compared with a fall of 8.0% at the national level.

Advertisements for highly skilled (legal/admin/managers & professionals) occupations in Auckland declined by 20.0% in the year to December 2006.

Advertisements for skilled (ass.profs/tech & trades workers) occupations in Auckland declined by 31.4% in the year to December 2006.

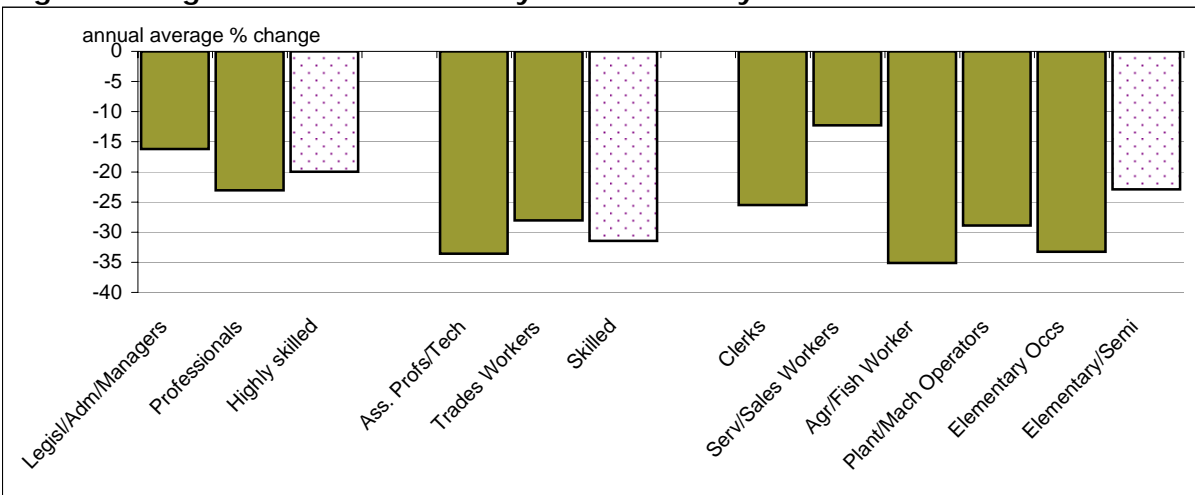
Advertisements for semi-skilled / elementary (clerks, serv/sales workers, agr/fish workers, plant /mach operators & elementary) occupations in Auckland declined by 22.9% in the year to December 2006.

**Figure 5: Regional and national trends in vacancy counts**



Source: Job Vacancy Monitor, Department of Labour

**Figure 6: Regional trends in vacancy counts in the year to December 2006**



Source: Job Vacancy Monitor, Department of Labour

Note: Skill categories (highly skilled, skilled and elementary/semi) are averages of the occupation groups shown to the left.

For a more detailed labour market outlook for New Zealand as a whole, go to the Department of Labour's *Labour Market Outlook Report* at <http://www.dol.govt.nz/publications/lmr/lmr-labour-market-outlook.asp>.

For more detailed results from the Job Vacancy Monitor, go to the Department of Labour's *Job Vacancy Monitoring Reports* at <http://www.dol.govt.nz/publications/jvm/job-ad-monthly-report.asp>.

## High Vacancy Occupations

Below is a list of occupations from the JVM that have the highest number of vacancies (high vacancy occupations), and those occupations that have shown the highest growth in advertised vacancies in terms of percentage change (top percentage growth occupations) and numerical change (top numeric growth occupations) in Auckland.

The number of vacancies is measured as the total number of vacancies advertised in the twelve months to December 2006. The growth in vacancies compares the number of advertised vacancies in the 12 months to December 2006 with the previous 12 months. Percentage growth figures are only included if at least 24 vacancies occurred in the year to December 2005.

**Table 3: Auckland high vacancy occupations, December 2006**

Occupation group	Vacancies
1 Sales Assistant	1,361
2 Sales Representative	819
3 Information Clerk and Other Receptionist	692
4 Secretary	593
5 General Clerk	552
6 Chef	456
7 Accountant	450
8 Dispatch and Receiving Clerk	410
9 Waiter	366
10 Accounts Clerk	321
11 Telephone Switchboard Operator	285
12 Retail Manager	282
13 Catering Counter Assistant	273
14 Light Truck or Van Driver	272
15 Bank Officer	272
16 Administration Manager	261
17 Sales and/or Marketing Manager	260
18 Heavy Truck or Tanker Driver	229
19 Cleaner	221
20 Insurance Representative	221

**Table 4: Auckland, top percentage growth occupations, December 2006**

Occupation group	Vacancies
1 Bank Officer	395%
2 Quantity Surveyor	156%
3 Other Electronics Engineering Technician	61%
4 Auditor	56%
5 Transport Electrician	52%
6 Restaurant or Tavern Manager	46%
7 Legal Executive	43%
8 Heating, Ventilation and Refrigeration Mechanic	39%
9 Construction Manager	37%
10 Demonstrator	35%
11 Other Civil Engineer	33%
12 Glazier	32%
13 Real Estate Agent/Property Consultant	25%
14 Fundraiser	23%
15 Light Truck or Van Driver	23%
16 Social Worker	21%
17 Costing Clerk	17%
18 Care Giver	15%
19 Kitchenhand	14%
20 General Manager	14%

**Table 5: Auckland top numeric growth occupations, December 2006**

Occupation group	Vacancies
1 Bank Officer	217
2 Quantity Surveyor	61
3 Light Truck or Van Driver	50
4 Auditor	43
5 Demonstrator	33
6 Restaurant or Tavern Manager	25
7 Real Estate Agent/Property Consultant	22
8 Social Worker	21
9 Heating, Ventilation and Refrigeration Mechanic	17
10 Kitchenhand	17
10 Other Electronics Engineering Technician	17
11 Legal Executive	15
12 Construction Manager	14
13 Checkout Operator	13
14 Transport Electrician	13
15 Police Officer	13
16 Financial Adviser	11
17 Structural Engineer	11
18 Other Civil Engineer	10
19 Linesperson	10

## GLOSSARY

**Working-age population:** population aged 15 years and over.

**Labour force:** number of people who are either in work or are available and actively seeking work (that is, employed or unemployed as defined below).

**Employment:** number of people in work of one hour or more per week.

**Unemployment:** number of people who are not in work, but who are available for and actively seeking work.

**Not in the labour force:** number of people who are not in work and are either not available or not actively seeking work (that is, they are not employed and not unemployed). This includes for example, retired people, students and people at home with children.

**Labour force participation rate:** proportion of the working-age population that is in the labour force.

**Unemployment rate:** proportion of the labour force that is unemployed.

**Employment rate:** proportion of the working-age population that is employed.

**Job Vacancy Count:** a monthly count of job advertisements in selected editions of 25 major newspapers around New Zealand and three websites advertising IT vacancies, published by Department of Labour (<http://www.dol.govt.nz/publications/jvm/job-ad-monthly-report.asp>).

**Highly skilled workers:** legislators, administrators and managers, and professionals.

**Skilled workers:** technicians and associate professionals, and trades workers.

**Semi-skilled/elementary:** clerks, services/sales workers, plant/machinery workers, and elementary workers.

**Annual average:** the average for a whole year (eg year to December 2006).

**Annual average percentage change:** the percentage change between the average for a whole year (eg the year to December 2006) and the previous year (eg the year to December 2005). Unless stated, all growth rates are annual average percentage changes.

## LINKS TO OTHER LABOUR MARKET REPORTS

**Skills in the labour market:** summarises quarterly information on skill shortages, primarily focused on the Quarterly Survey of Business Opinion (QSBO) from the New Zealand Institute of Economic Research (NZIER) and the Job Vacancy Monitor (JVM) from the Department of Labour (<http://www.dol.govt.nz/publications/lmr/lmr-skills.asp>).

**Labour market outlook:** provides an outlook for the labour market over the next two years. The forecasts are detailed in a table and accompanied by descriptive analysis and a table of comparative forecasts is presented in an Appendix (<http://www.dol.govt.nz/publications/lmr/lmr-labour-market-outlook.asp>).

**Employment/unemployment:** a report that informs about the results from the latest Household Labour Force Survey released by Statistics New Zealand (<http://www.dol.govt.nz/publications/lmr/lmr-hlfs.asp>).

**Wage growth:** a report that examines the wage growth measures for the latest quarter from the Labour Cost Index (LCI) and Quarterly Employment Survey (QES) released by Statistics New Zealand. A technical note and data tables are included in the appendices (<http://www.dol.govt.nz/publications/lmr/lmr-qes-lci.asp>).

**Maori labour market outcomes:** a 6-monthly update focusing on changes in the past six years and prospects for the next two years. Data are from the quarterly Household Labour Force Survey (HLFS) from Statistics New Zealand amongst others. (<http://www.dol.govt.nz/publications/lmr/lmr-maori-outcomes.asp>).

**Contact: Charlotte Bull Department of Labour Communications Advisor (04) 915-4716**

Disclaimer: The Department of Labour has made every effort to ensure that the information contained in this report is reliable, but makes no guarantee of its accuracy or completeness and does not accept any liability for any errors. The information and opinions contained in this report are not intended to be used as a basis for commercial decisions and the Department accepts no liability for any decisions made in reliance on them. The Department may change, add to, delete from, or otherwise amend the contents of this report at any time without notice. The material contained in this report is subject to Crown copyright protection unless otherwise indicated. The Crown copyright protected material may be reproduced free of charge in any format or media without requiring specific permission. This is subject to the material being reproduced accurately and not being used in a derogatory manner or in a misleading context. Where the material is being published or issued to others, the source and copyright status should be acknowledged. The permission to reproduce Crown copyright protected material does not extend to any material in this report that is identified as being the copyright of a third party. Authorisation to reproduce such material should be obtained from the copyright holders.