



Māori Labour Market Factsheet – December 2011

This factsheet reports key labour market information for Māori for the year to December 2011. All data is sourced from the Household Labour Force Survey released quarterly by Statistics New Zealand. Data is annualised to address sampling error and seasonal variation concerns.¹ For the purposes of this factsheet "total response" data is used. This means that Māori refers to everyone who has selected that ethnic group, regardless of whether they have also selected another group.

In December 2011, 438,300 Māori were aged 15 years and over, of whom 65.9% were in the labour force while 34.1% were not in the labour force², due to such reasons as child rearing, retirement or studying. Those employed and unemployed are discussed in further detail below.



Labour force participation

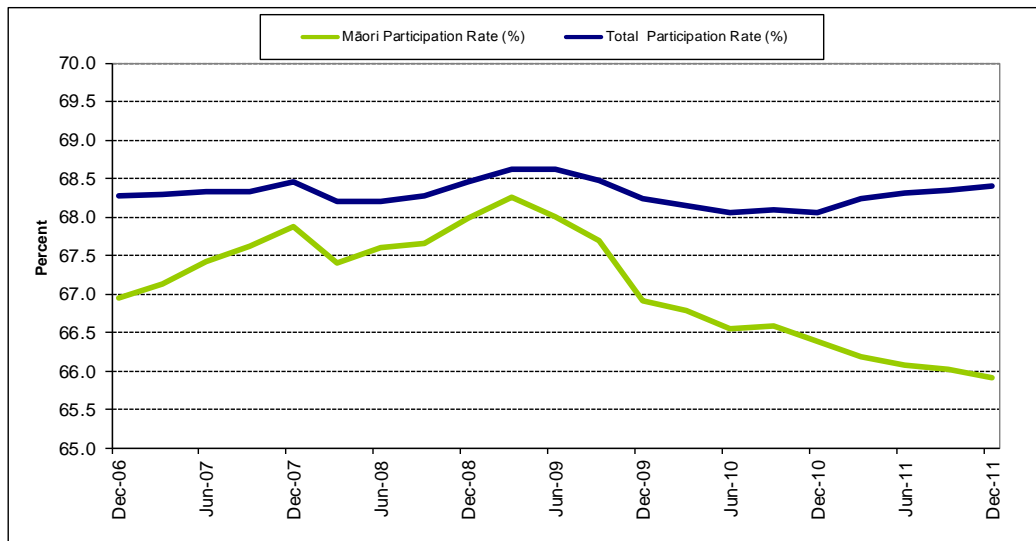
The labour force participation rate for Māori stood at 65.9% for the year to December 2011, which represents a 0.5 percentage point decrease over the past year and a 1.0 percentage point decrease over the past five years. Compared with the participation rate for all people, which was 68.4% in the year to December 2011, the Māori rate has decreased more sharply over the past year.

¹ Data from the Household Labour Force Survey has been annualised by averaging the results from the past four quarters. This may occasionally result in a small rounding error compared to annual results produced directly by Statistics New Zealand.

² See end of report for definitions of concepts and rates used in this report.



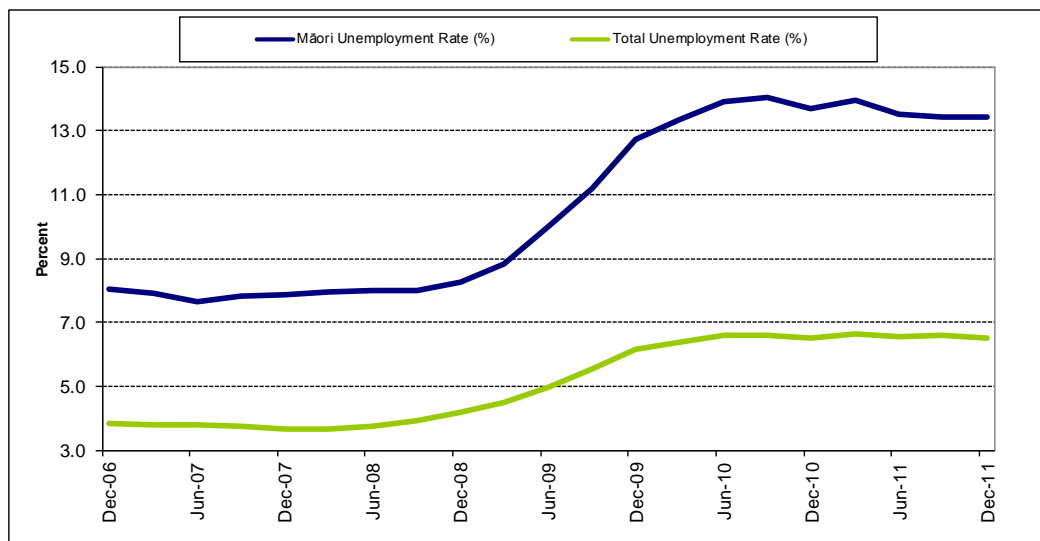
Labour force participation rates, 2006-2011



Unemployment

The unemployment rate for Māori was 13.4% in the year to December 2011, which was -0.2 percentage points below its level a year ago, and 5.4 percentage points higher than its level five years ago. Compared with the unemployment rate for all people, which was 6.5% in the year to December 2011, the Māori rate has decreased more sharply.

Unemployment rates, 2006-2011

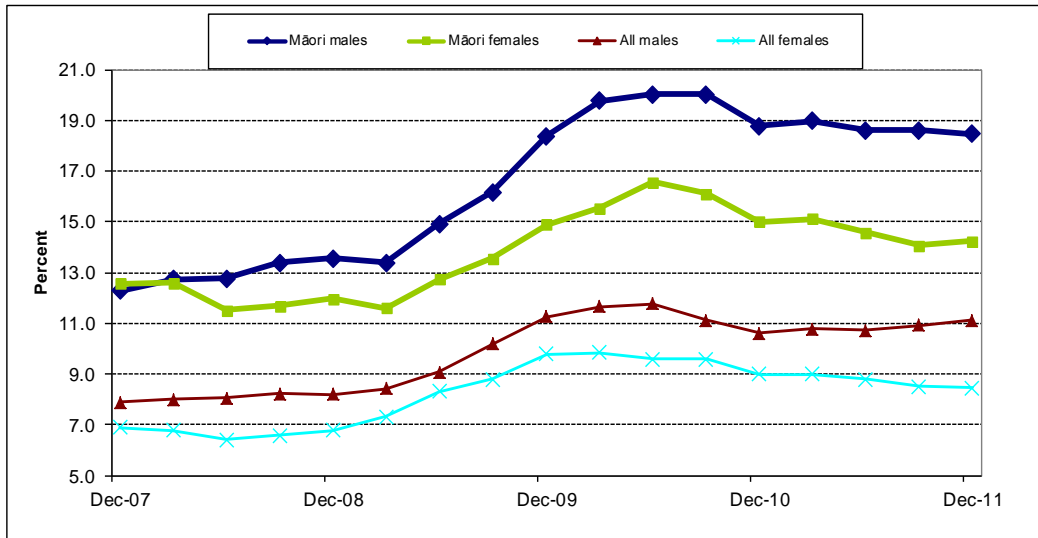




Not in Education, Employment or Training (NEET)

The NEET rate is a key measure of youth disengagement. Among 15-24 year olds, in the year to December 2011, 18.5% of Māori males and 14.2% of Māori females were NEET, compared with 11.1% of all males and 8.4% of females in this age group. The NEET rate for total males experienced the highest rate of growth over the past year.

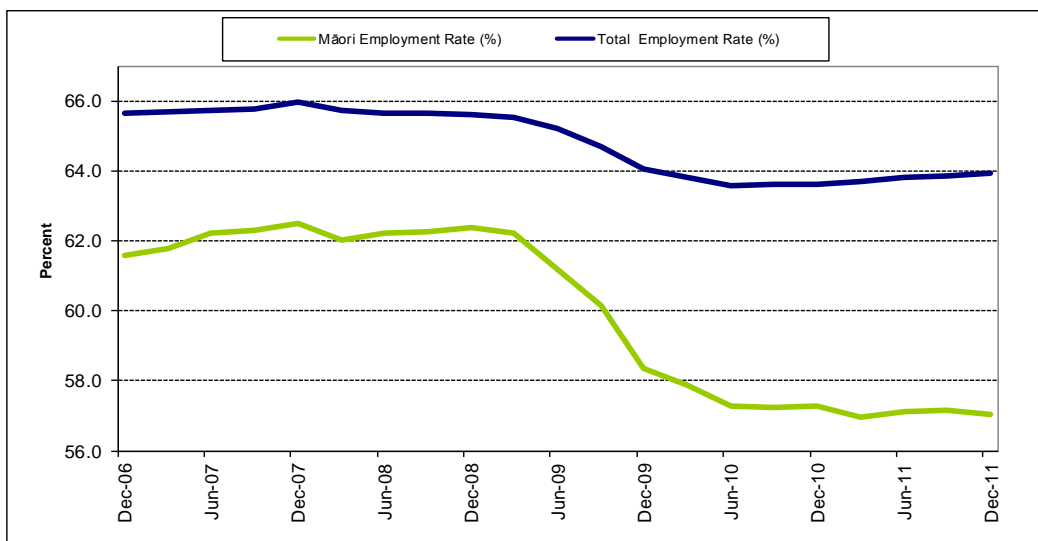
NEET rates, 2007-2011



Employment

In the year to December 2011, 250,000 Māori were in employment. Over the last five years, the employment rate of Māori decreased 4.5 percentage points from 61.6% to 57.0%. The rate is below that for the total population, which stood at 63.9% in December 2011.

Employment rates, 2006-2011





In the year to December 2011, the leading industries in which Māori worked were manufacturing (37,200 workers) and wholesale & retail (28,700 workers).

Māori employment by industry

| | Dec-11 |
|--|---------------|
| Industry | (000) |
| Agriculture, Forestry, Fishing & Mining | 22.4 |
| Manufacturing | 37.2 |
| Utilities and Construction | 23.4 |
| Wholesale & Retail | 28.7 |
| Accommodation & Food Services | 14.9 |
| Transport, Warehousing & Communications | 18.3 |
| Financial and Insurance | 3.8 |
| Other Business Services | 20.8 |
| Public Admin and Safety | 17.2 |
| Education & Training | 23.0 |
| Health Care & Social Assistance | 27.2 |
| Other Services | 12.2 |
| Total Employed (including Not Specified) | 250.0 |

In the year to December 2011, the most common occupational groups for Māori were labourers (52,500 workers) and professionals (41,700 workers).

Māori employment by occupation

| | Dec-11 |
|---|---------------|
| Occupation | (000) |
| Managers | 27.9 |
| Professionals | 41.7 |
| Technicians & trades workers | 26.8 |
| Community & personal service workers | 29.7 |
| Clerical & administrative workers | 25.9 |
| Sales workers | 18.0 |
| Machinery operators & drivers | 26.5 |
| Labourers | 52.5 |
| Total Employed | 250.0 |



Labour market terms explained

Employment: The number of people in work for one hour or more per week.

Employment rate: The proportion of the working-age population that is employed.

Labour force: The labour force consists of members of the working-age population who are classified as employed or unemployed (people in the labour force).

Labour force participation rate: The proportion of the working-age population who are either employed or unemployed.

Not in the labour force: Any person in the working-age population who is neither employed nor unemployed. This includes, for example, retired people, students and people at home with children.

NEET: This measure refers to youth not engaged in education, employment and training. Youth who are not engaged in these activities are at risk of poor labour market outcomes. In this report, caregiving is deemed to be engagement and so is excluded from the way NEET is measured.

Unemployment: The number of people in the working-age population who are without a paid job, are available for work and have actively sought work in the past four weeks or have a new job to start within the next four weeks.

Unemployment rate: The proportion of the labour force that is unemployed.

Working-age population: Usually resident population aged 15 years and over.

For more information contact : Research@dol.govt.nz

Next release: 3 May 2012